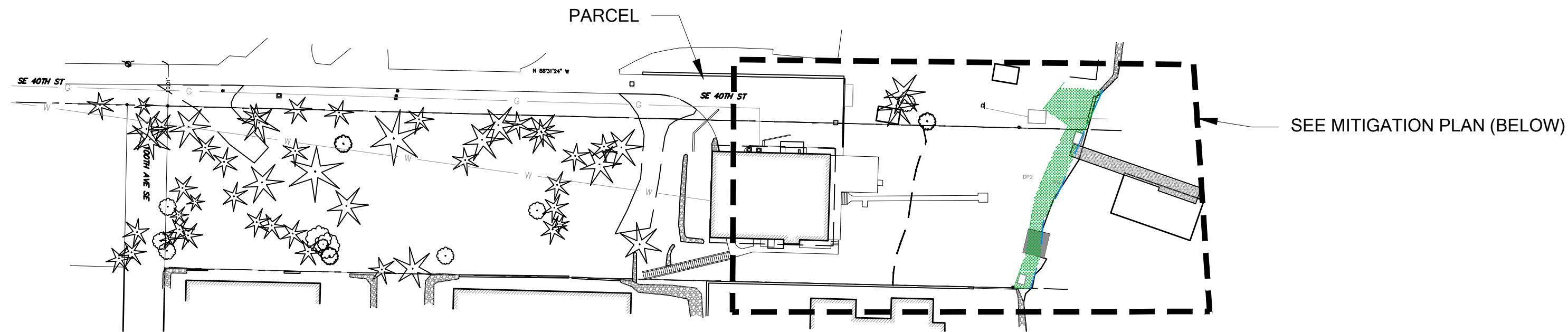


MOUNGER RESIDENCE



PARCEL OVERVIEW

SCALE 1"= 50'

LEGEND

- PARCEL BOUNDARY
- DELINEATED OHWM
- DATA POINT
- WETLAND FLAGS
- DELINEATED WETLAND BOUNDARY
- SHORELINE SETBACK (50 FT)
- SHORELINE BUFFER (25 FT)
- WETLAND BUFFER (60 FT)
- WETLAND BUFFER BSBL

MITIGATION LEGEND

- PRE-EXISTING IMPACT IN WETLAND
- 20' SHORELINE ENHANCEMENT (770 SF)
- SHORELINE ENHANCEMENT OVER WETLAND (481 SF)

MITIGATION AREA NOTES

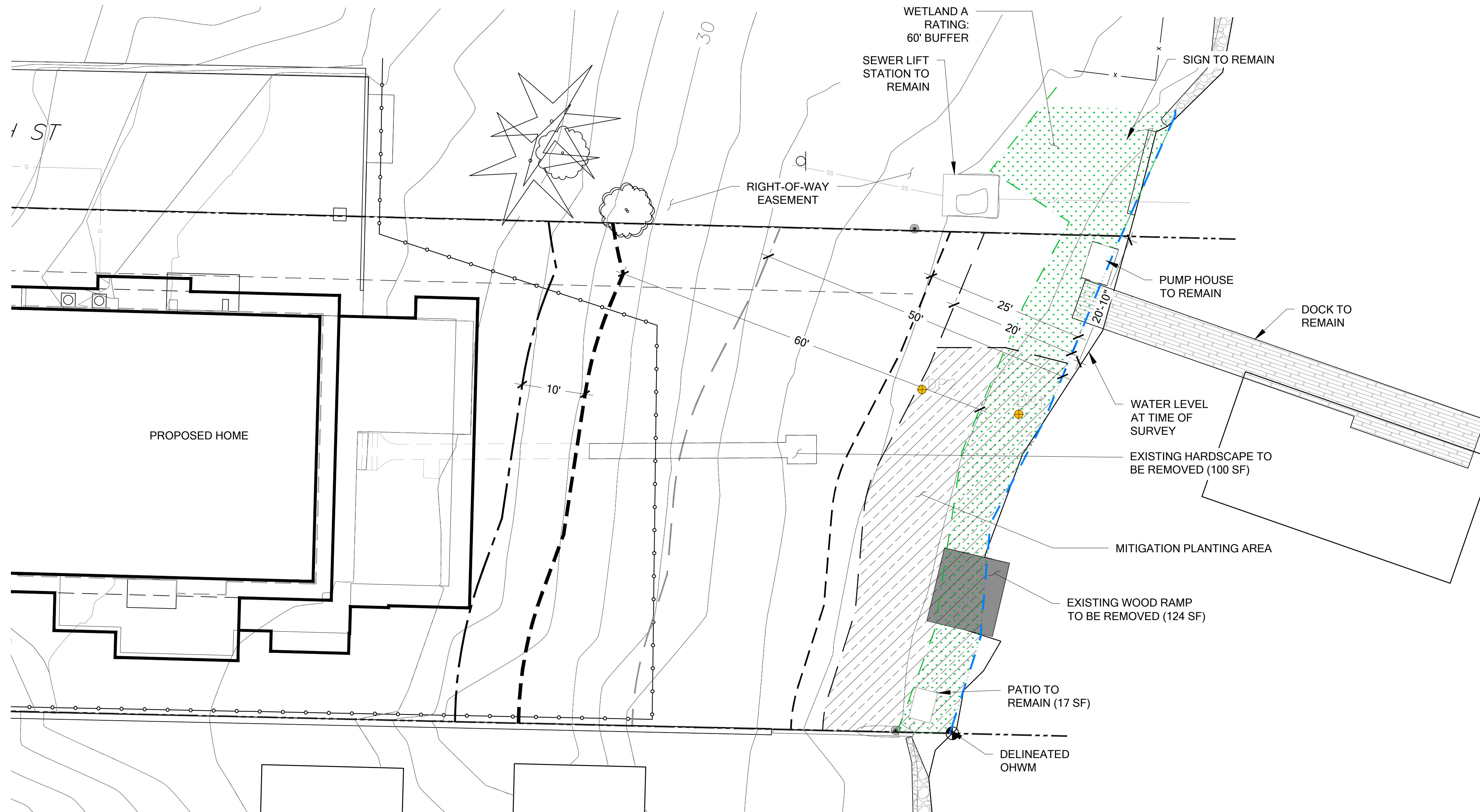
1. TOTAL AREA WITHIN 20 FT OF THE OHWM = 1,668 SF
2. TOTAL PLANTED SHORELINE AREA = 75% = 1,251 SF
3. TOTAL ACCESS AREA = 25% = 417 SF

SHEET INDEX

- W1 MITIGATION PLAN AND PARCEL OVERVIEW
- W2 PLANTING PLAN AND SCHEDULE
- W3 MITIGATION DETAILS AND NOTES

NOTES

1. WETLAND AND OHWM DELINEATED BY THE WATERSHED COMPANY ON MAY 19, 2020
2. SITE PLAN PROVIDED BY STURMAN ARCHITECTS; 103RD AVENUE NE, SUITE 203, BELLEVUE, WA 98004 (425) 451-7003



MITIGATION PLAN

SCALE 1:10



PERMIT SET

NOT FOR CONSTRUCTION

-

NOT FOR CONSTRUCTION

MOUNGER RESIDENCE
SHORELINE MITIGATION PLAN
PREPARED FOR: BRAD STURMAN

4006 EAST MERCER WAY
 MERCER ISLAND, WA 98040

SUBMITTALS & REVISIONS		BY	DATE	DESCRIPTION
1	08-20-2020	AS/MF	08-20-2020	MITIGATION PLANTING PLAN
2	06-07-2021	AF	06-07-2021	MITIGATION PLANTING PLAN REVISED

SHEET SIZE:
ORIGINAL PLAN IS 22" x 34".
SCALE ACCORDINGLY.

PROJECT MANAGER: RK
DESIGNED: RK/MF
DRAFTED: AS/MF/AF
CHECKED: RK

JOB NUMBER:
200509
SHEET NUMBER:
W1 OF 3



PLANT INSTALLATION SPECIFICATIONS

GENERAL NOTES

QUALITY ASSURANCE

- PLANTS SHALL MEET OR EXCEED THE SPECIFICATIONS OF FEDERAL, STATE, AND LOCAL LAWS REQUIRING INSPECTION FOR PLANT DISEASE AND INSECT CONTROL.
- PLANTS SHALL BE HEALTHY, VIGOROUS, AND WELL-FORMED, WITH WELL DEVELOPED, FIBROUS ROOT SYSTEMS, FREE FROM DEAD BRANCHES OR ROOTS. PLANTS SHALL BE FREE FROM DAMAGE CAUSED BY TEMPERATURE EXTREMES, LACK OR EXCESS OF MOISTURE, INSECTS, DISEASE, AND MECHANICAL INJURY. PLANTS IN LEAF SHALL BE WELL FOLIATED AND OF GOOD COLOR. PLANTS SHALL BE HABITUATED TO THE OUTDOOR ENVIRONMENTAL CONDITIONS INTO WHICH THEY WILL BE PLANTED (HARDENED-OFF).
- TREES WITH DAMAGED, CROOKED, MULTIPLE OR BROKEN LEADERS WILL BE REJECTED. WOODY PLANTS WITH ABRASIONS OF THE BARK OR SUN SCALD WILL BE REJECTED.
- NOMENCLATURE: PLANT NAMES SHALL CONFORM TO FLORA OF THE PACIFIC NORTHWEST BY HITCHCOCK AND CRONQUIST, UNIVERSITY OF WASHINGTON PRESS, 1973 AND/OR TO A FIELD GUIDE TO THE COMMON WETLAND PLANTS OF WESTERN WASHINGTON & NORTHWESTERN OREGON, ED. SARAH SPEAR COOKE, SEATTLE AUDUBON SOCIETY, 1997.

DEFINITIONS

- PLANTS/PLANT MATERIALS. PLANTS AND PLANT MATERIALS SHALL INCLUDE ANY LIVE PLANT MATERIAL USED ON THE PROJECT. THIS INCLUDES BUT IS NOT LIMITED TO CONTAINER GROWN, B&B OR BAREROOT PLANTS; LIVE STAKES AND FASCINES (WATTLES); TUBERS, CORMS, BULBS, ETC.; SPRIGS, PLUGS, AND LINERS.
- CONTAINER GROWN. CONTAINER GROWN PLANTS ARE THOSE WHOSE ROOTBALLS ARE ENCLOSED IN A POT OR BAG IN WHICH THAT PLANT GREW.

SUBSTITUTIONS

- IT IS THE CONTRACTOR'S RESPONSIBILITY TO OBTAIN SPECIFIED MATERIALS IN ADVANCE IF SPECIAL GROWING, MARKETING OR OTHER ARRANGEMENTS MUST BE MADE IN ORDER TO SUPPLY SPECIFIED MATERIALS.
- SUBSTITUTION OF PLANT MATERIALS NOT ON THE PROJECT LIST WILL NOT BE PERMITTED UNLESS AUTHORIZED IN WRITING BY THE RESTORATION CONSULTANT.
- IF PROOF IS SUBMITTED THAT ANY PLANT MATERIAL SPECIFIED IS NOT OBTAINABLE, A PROPOSAL WILL BE CONSIDERED FOR USE OF THE NEAREST EQUIVALENT SIZE OR ALTERNATIVE SPECIES, WITH CORRESPONDING ADJUSTMENT OF CONTRACT PRICE.
- SUCH PROOF WILL BE SUBSTANTIATED AND SUBMITTED IN WRITING TO THE CONSULTANT AT LEAST 30 DAYS PRIOR TO START OF WORK UNDER THIS SECTION.

INSPECTION

- PLANTS SHALL BE SUBJECT TO INSPECTION AND APPROVAL BY THE RESTORATION CONSULTANT FOR CONFORMANCE TO SPECIFICATIONS, EITHER AT TIME OF DELIVERY ON-SITE OR AT THE GROWER'S NURSERY. APPROVAL OF PLANT MATERIALS AT ANY TIME SHALL NOT IMPAIR THE SUBSEQUENT RIGHT OF INSPECTION AND REJECTION DURING PROGRESS OF THE WORK.
- PLANTS INSPECTED ON SITE AND REJECTED FOR NOT MEETING SPECIFICATIONS MUST BE REMOVED IMMEDIATELY FROM SITE OR RED-TAGGED AND REMOVED AS SOON AS POSSIBLE.
- THE RESTORATION CONSULTANT MAY ELECT TO INSPECT PLANT MATERIALS AT THE PLACE OF GROWTH. AFTER INSPECTION AND ACCEPTANCE, THE RESTORATION CONSULTANT MAY REQUIRE THE INSPECTED PLANTS BE LABELED AND RESERVED FOR PROJECT. SUBSTITUTION OF THESE PLANTS WITH OTHER INDIVIDUALS, EVEN OF THE SAME SPECIES AND SIZE, IS UNACCEPTABLE.

MEASUREMENT OF PLANTS

- PLANTS SHALL CONFORM TO SIZES SPECIFIED UNLESS SUBSTITUTIONS ARE MADE AS OUTLINED IN THIS CONTRACT.
- HEIGHT AND SPREAD DIMENSIONS SPECIFIED REFER TO MAIN BODY OF PLANT AND NOT BRANCH OR ROOT TIP TO TIP. PLANT DIMENSIONS SHALL BE MEASURED WHEN THEIR BRANCHES OR ROOTS ARE IN THEIR NORMAL POSITION.
- WHERE A RANGE OF SIZE IS GIVEN, NO PLANT SHALL BE LESS THAN THE MINIMUM SIZE AND AT LEAST 50% OF THE PLANTS SHALL BE AS LARGE AS THE MEDIAN OF THE SIZE RANGE. (EXAMPLE: IF THE SIZE RANGE IS 12" TO 18", AT LEAST 50% OF PLANTS MUST BE 15" TALL.)

SUBMITTALS

- PROPOSED PLANT SOURCES
1. WITHIN 45 DAYS AFTER AWARD OF THE CONTRACT, SUBMIT A COMPLETE LIST OF PLANT MATERIALS PROPOSED

TO BE PROVIDED DEMONSTRATING CONFORMANCE WITH THE REQUIREMENTS SPECIFIED. INCLUDE THE NAMES AND ADDRESSES OF ALL GROWERS AND NURSERIES.

PRODUCT CERTIFICATES

- PLANT MATERIALS LIST - SUBMIT DOCUMENTATION TO CONSULTANT AT LEAST 30 DAYS PRIOR TO START OF WORK UNDER THIS SECTION THAT PLANT MATERIALS HAVE BEEN ORDERED. ARRANGE PROCEDURE FOR INSPECTION OF PLANT MATERIAL WITH CONSULTANT AT TIME OF SUBMISSION.
- HAVE COPIES OF VENDOR'S OR GROWERS' INVOICES OR PACKING SLIPS FOR ALL PLANTS ON SITE DURING INSTALLATION. INVOICE OR PACKING SLIP SHOULD LIST SPECIES BY SCIENTIFIC NAME, QUANTITY, AND DATE DELIVERED (AND GENETIC ORIGIN IF THAT INFORMATION WAS PREVIOUSLY REQUESTED).

DELIVERY, HANDLING, & STORAGE

NOTIFICATION
CONTRACTOR MUST NOTIFY CONSULTANT 48 HOURS OR MORE IN ADVANCE OF DELIVERIES SO THAT CONSULTANT MAY ARRANGE FOR INSPECTION.

PLANT MATERIALS

- TRANSPORTATION - DURING SHIPPING, PLANTS SHALL BE PACKED TO PROVIDE PROTECTION AGAINST CLIMATE EXTREMES, BREAKAGE AND DRYING. PROPER VENTILATION AND PREVENTION OF DAMAGE TO BARK, BRANCHES, AND ROOT SYSTEMS MUST BE ENSURED.
- SCHEDULING AND STORAGE - PLANTS SHALL BE DELIVERED AS CLOSE TO PLANTING AS POSSIBLE. PLANTS IN STORAGE MUST BE PROTECTED AGAINST ANY CONDITION THAT IS DETRIMENTAL TO THEIR CONTINUED HEALTH AND VIGOR.
- HANDLING - PLANT MATERIALS SHALL NOT BE HANDLED BY THE TRUNK, LIMBS, OR FOLIAGE BUT ONLY BY THE CONTAINER, BALL, BOX, OR OTHER PROTECTIVE STRUCTURE. EXCEPT BAREROOT PLANTS SHALL BE KEPT IN BUNDLES UNTIL PLANTING AND THEN HANDLED CAREFULLY BY THE TRUNK OR STEM.
- LABELS - PLANTS SHALL HAVE DURABLE, LEGIBLE LABELS STATING CORRECT SCIENTIFIC NAME AND SIZE. TEN PERCENT OF CONTAINER GROWN PLANTS IN INDIVIDUAL POTS SHALL BE LABELED. PLANTS SUPPLIED IN FLATS, RACKS, BOXES, BAGS, OR BUNDLES SHALL HAVE ONE LABEL PER GROUP.

WARRANTY

PLANT WARRANTY
PLANTS MUST BE GUARANTEED TO BE TRUE TO SCIENTIFIC NAME AND SPECIFIED SIZE, AND TO BE HEALTHY AND CAPABLE OF VIGOROUS GROWTH.

REPLACEMENT

- PLANTS NOT FOUND MEETING ALL OF THE REQUIRED CONDITIONS AT THE CONSULTANT'S DISCRETION MUST BE REMOVED FROM SITE AND REPLACED IMMEDIATELY AT THE CONTRACTOR'S EXPENSE.
- PLANTS NOT SURVIVING AFTER ONE YEAR TO BE REPLACED AT THE CONTRACTOR'S EXPENSE.

PLANT MATERIAL

GENERAL

- PLANTS SHALL BE NURSERY GROWN IN ACCORDANCE WITH GOOD HORTICULTURAL PRACTICES UNDER CLIMATIC CONDITIONS SIMILAR TO OR MORE SEVERE THAN THOSE OF THE PROJECT SITE.
- PLANTS SHALL BE TRUE TO SPECIES AND VARIETY OR SUBSPECIES. NO CULTIVARS OR NAMED VARIETIES SHALL BE USED UNLESS SPECIFIED AS SUCH.

QUANTITIES

SEE PLANT LIST ON ACCOMPANYING PLANS AND PLANT SCHEDULES.

ROOT TREATMENT

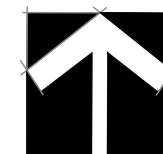
- CONTAINER GROWN PLANTS (INCLUDES PLUGS): PLANT ROOT BALLS MUST HOLD TOGETHER WHEN THE PLANT IS REMOVED FROM THE POT, EXCEPT THAT A SMALL AMOUNT OF LOOSE SOIL MAY BE ON THE TOP OF THE ROOTBALL.
- PLANTS MUST NOT BE ROOT-BOUND; THERE MUST BE NO CIRCLING ROOTS PRESENT IN ANY PLANT INSPECTED.
- ROOTBALLS THAT HAVE CRACKED OR BROKEN WHEN REMOVED FROM THE CONTAINER SHALL BE REJECTED.

PLANT SCHEDULE

TREES	COMMON / BOTANICAL NAME	SIZE	QTY	GROUNDCOVER	COMMON / BOTANICAL NAME	SIZE	SPACING	QTY	REMARKS
	PAPER BIRCH / BETULA PAPYRIFERA	1.5" CAL	1		GOATSBEARD / ARUNCUS SYLVESTER	1 GAL.	24" O.C.	25	PLANT IN SAME-SPECIES GROUPINGS OF 3-9 PLANTS
	OREGON ASH / FRAXINUS LATIFOLIA	5 GAL.	1		TUFTED HAIRGRASS / DESCHAMPSIA CESPITOSA	1 GAL.	24" O.C.	25	
	SHORE PINE / PINUS CONTORTA	6 FT B&B	1		SMALL-FRUITED BULRUSH / SCIRPUS MICROCARPUS	4" POT/PLUG	24" O.C.	25	
	VINE MAPLE / ACER CIRCINATUM	5 GAL.	1		WESTERN COLUMBINE / AQUILEGIA FORMOSA	1 GAL.	24" O.C.	12	PLANT IN SAME SPECIES GROUPINGS 5-9 PLANTS IN CLUSTERS THROUGHOUT PLANTING BED
	CORNUS SERICEA 'KELSEY' / RED-TWIG DOGWOOD	1 GAL.	15		SWORD FERN / POLYSTICHUM MUNITUM	1 GAL.	24" O.C.	24	
	PACIFIC BAYBERRY / MORELLA CALIFORNICA	5 GAL.	2		OREGON STONECROP / SEDUM OREGONUM	4" POT	15" O.C.	32	
	MOCK ORANGE / PHILADELPHUS LEWISII	1 GAL.	6		TOUGH-LEAF IRIS / IRIS TENAX	1 GAL.	24" O.C.	12	
	CLUSTERED WILD ROSE / ROSA PISOCARPA	1 GAL.	7						
	ROSE SPIREA / SPIRAEA DENSIFLORA	1 GAL.	6						
	VACCINIUM OVATUM / EVERGREEN HUCKLEBERRY	2 GAL.	3						

PLANTING PLAN AND SCHEDULE

SCALE 1:10



NOTES

- SEE SHEET W3 FOR SITE PREPARATION AND PLANTING DETAILS.

PERMIT SET

NOT FOR CONSTRUCTION

SHEET SIZE:
ORIGINAL PLAN IS 22" x 34".
SCALE ACCORDINGLY.

PROJECT MANAGER: RK
DESIGNED: RK/MF
DRAFTED: AS/MF/AF
CHECKED: RK

JOB NUMBER: 200509

SHEET NUMBER: W2 OF 3

DATE PRINTED BY FILENAME

SUBMITTALS & REVISIONS

NO.	DATE	DESCRIPTION	BY
1	08-20-2020	MITIGATION PLANTING PLAN	AS/MF
2	06-07-2021	MITIGATION PLANTING PLAN REVISED	AF

MITIGATION SPECIFICATIONS

OVERVIEW

A COMPREHENSIVE FIVE-YEAR MAINTENANCE AND MONITORING PLAN IS INCLUDED AS PART OF THE SHORELINE AND WETLAND/WETLAND BUFFER ENHANCEMENT. THE PLAN SPECIFIES APPROPRIATE SPECIES FOR PLANTING AND PLANTING TECHNIQUES, DESCRIBES PROPER MAINTENANCE ACTIVITIES, AND SETS FORTH PERFORMANCE STANDARDS TO BE MET YEARLY DURING MONITORING. THIS WILL ENSURE THAT ENHANCEMENT/RESTORATION PLANTINGS WILL BE MAINTAINED, MONITORED, AND SUCCESSFULLY ESTABLISHED WITHIN THE FIRST FIVE YEARS FOLLOWING IMPLEMENTATION.

PROPOSED RESTORATION BEGINS WITH INCORPORATING COMPOST INTO THE BUFFER ENHANCEMENT AREA. NO COMPOST SHALL BE APPLIED IN THE WETLAND. THIS WILL BE FOLLOWED BY INSTALLATION OF THREE NATIVE TREE SPECIES, SEVEN NATIVE SHRUB SPECIES, AND EIGHT NATIVE GROUNDCOVER SPECIES SUITABLE TO THE SITE. THE PLAN CALLS FOR NEW PLANTINGS WITHIN THE INNER 20-FOOT SHORELINE SETBACK AREA, INCLUDING WITHIN WETLAND A AND THE OVERLAPPING SHORELINE SETBACK/WETLAND A BUFFER. NATIVE PLANTINGS ARE INTENDED TO INCREASE NATIVE PLANT COVER, IMPROVE NATIVE SPECIES DIVERSITY, IMPROVE VEGETATIVE SCREENING, INCREASE VEGETATIVE STRUCTURE, AND PROVIDE FOOD AND OTHER HABITAT RESOURCES FOR WILDLIFE.

GOALS

ENHANCE SHORELINE BUFFERS.

- a. REDUCE THE AMOUNT OF IMPERVIOUS SURFACE AREA WITHIN THE WETLAND BUFFER AND SHORELINE SETBACK.
- b. ESTABLISH DENSE AND DIVERSE NATIVE TREE, SHRUB, AND GROUNDCOVER VEGETATION THROUGHOUT THE MITIGATION AREA.

PERFORMANCE STANDARDS

THE STANDARDS LISTED BELOW WILL BE USED TO JUDGE THE SUCCESS OF THE PLAN OVER TIME. IF THE STANDARDS ARE MET AT THE END OF THE FIVE-YEAR MONITORING PERIOD, THE CITY SHALL ISSUE RELEASE OF THE PERFORMANCE BOND.

1. SURVIVAL:

- a. 100% SURVIVAL OF ALL INSTALLED TREES AND SHRUBS AT THE END OF YEAR-1. THIS STANDARD MAY BE MET THROUGH ESTABLISHMENT OF INSTALLED PLANTS OR BY REPLANTING AS NECESSARY TO ACHIEVE THE REQUIRED NUMBERS.
- b. 80% SURVIVAL OF ALL INSTALLED TREES AND SHRUBS AT THE END OF YEAR 2. THIS STANDARD MAY BE MET THROUGH ESTABLISHMENT OF INSTALLED PLANTS OR BY REPLANTING AS NECESSARY TO ACHIEVE THE REQUIRED NUMBERS.

2. NATIVE VEGETATION COVER IN PLANTED AREAS:

- a. ACHIEVE AT LEAST 60% COVER OF NATIVE TREES, SHRUBS, AND GROUNDCOVERS IN PLANTED AREAS BY THE END OF YEAR 3. VOLUNTEER SPECIES MAY COUNT TOWARD THIS STANDARD.
- b. ACHIEVE AT LEAST 80% COVER OF NATIVE TREES, SHRUBS, AND GROUNDCOVERS IN PLANTED AREAS BY THE END OF YEAR 5. VOLUNTEER SPECIES MAY COUNT TOWARD THIS STANDARD.

3. DIVERSITY: A MINIMUM OF TWO TREE SPECIES, FIVE SHRUB SPECIES, AND FIVE EMERGENT SPECIES WILL BE PRESENT IN THE MITIGATION AREA IN YEARS 3 - 5.

4. INVASIVE SPECIES STANDARD: NO MORE THAN 10% COVER OF INVASIVE SPECIES IN THE PLANTING AREA IN ANY MONITORING YEAR. INVASIVE SPECIES ARE DEFINED AS ANY CLASS A, B, OR C NOXIOUS WEEDS AS LISTED BY THE KING COUNTY NOXIOUS WEED CONTROL BOARD.

MONITORING METHODS

THIS MONITORING PROGRAM IS DESIGNED TO TRACK THE SUCCESS OF THE MITIGATION SITE OVER TIME BY MEASURING THE DEGREE TO WHICH THE PERFORMANCE STANDARDS LISTED ABOVE ARE BEING MET. AN AS-BUILT PLAN WILL BE PREPARED WITHIN 30 DAYS OF SUBSTANTIALLY COMPLETE CONSTRUCTION OF THE MITIGATION AREAS. THE AS-BUILT PLAN WILL DOCUMENT CONFORMANCE WITH THESE PLANS AND WILL DISCLOSE ANY SUBSTITUTIONS OR OTHER NON-CRITICAL DEPARTURES. THE AS-BUILT PLAN WILL ESTABLISH BASELINE PLANT INSTALLATION QUANTITIES AND PHOTOPOINTS THAT WILL BE USED THROUGHOUT THE MONITORING PERIOD TO VISUALLY DOCUMENT SITE CHANGES OVER TIME.

MONITORING WILL OCCUR ANNUALLY FOR FIVE YEARS. THE INSPECTION WILL OCCUR IN LATE SUMMER OR FALL AND WILL RECORD THE FOLLOWING AND BE SUBMITTED IN AN ANNUAL REPORT TO THE CITY:

- 1. COUNTS OF SURVIVING AND DEAD/DYING PLANTS BY SPECIES IN THE PLANTING AREAS.
- 2. ESTIMATES OF NATIVE SPECIES COVER USING COVER CLASS METHOD.
- 3. ESTIMATES OF INVASIVE SPECIES COVER USING COVER CLASS METHOD.
- 4. PHOTOGRAPHIC DOCUMENTATION AT PERMANENT PHOTOPOINTS.
- 5. RECOMMENDATIONS FOR MAINTENANCE IN THE MITIGATION AREAS.
- 6. RECOMMENDATIONS FOR REPLACEMENT OF ALL DEAD OR DYING PLANT MATERIAL WITH SAME OR LIKE SPECIES AND NUMBER AS ON THE APPROVED PLAN.

CONSTRUCTION NOTES AND SPECIFICATIONS

GENERAL NOTES

THE RESTORATION SPECIALIST WILL OVERSEE THE FOLLOWING:

- 1. CLEARING, SOIL DECOMPACTION, AND COMPOST INCORPORATION;
- 2. INVASIVE WEED CLEARING; AND
- 3. PLANT MATERIAL INSPECTION.
 - a) PLANT DELIVERY INSPECTION.
 - b) 100% PLANT INSTALLATION INSPECTION.

WORK SEQUENCE

- 1. CLEAR THE PLANTING AREA OF ALL INVASIVE SPECIES USING HAND TOOLS.
- 2. ROTO-TILL THREE INCHES OF COMPOST INTO THE UPPER 9 INCHES OF THE SOIL IN BUFFER AREAS ONLY. DO NOT APPLY COMPOST WITHIN THE WETLAND AREA.
- 3. ALL PLANT INSTALLATION WILL TAKE PLACE DURING THE DORMANT SEASON (OCTOBER 15TH TO MARCH 1ST).
- 4. LAYOUT VEGETATION TO BE INSTALLED PER THE PLANTING PLAN AND PLANT SCHEDULE.
- 5. PREPARE A PLANTING PIT FOR EACH PLANT AND INSTALL PER THE PLANTING DETAILS.
- 6. MULCH EACH TREE AND SHRUB WITH A CIRCULAR WOOD CHIP MULCH RING, FOUR INCHES THICK AND EXTENDING SIX INCHES FROM THE BASE OF THE PLANT (12-INCH DIAMETER) IN THE BUFFER AREAS ONLY. DO NOT APPLY MULCH IN WETLAND AREA. ALTERNATIVELY, A BLANKET MULCH APPLICATION MAY BE APPLIED TO THE ENTIRE RESTORATION AREA.

MAINTENANCE

THIS SITE WILL BE MAINTAINED FOR FIVE YEARS FOLLOWING COMPLETION OF THE PLANT INSTALLATION.

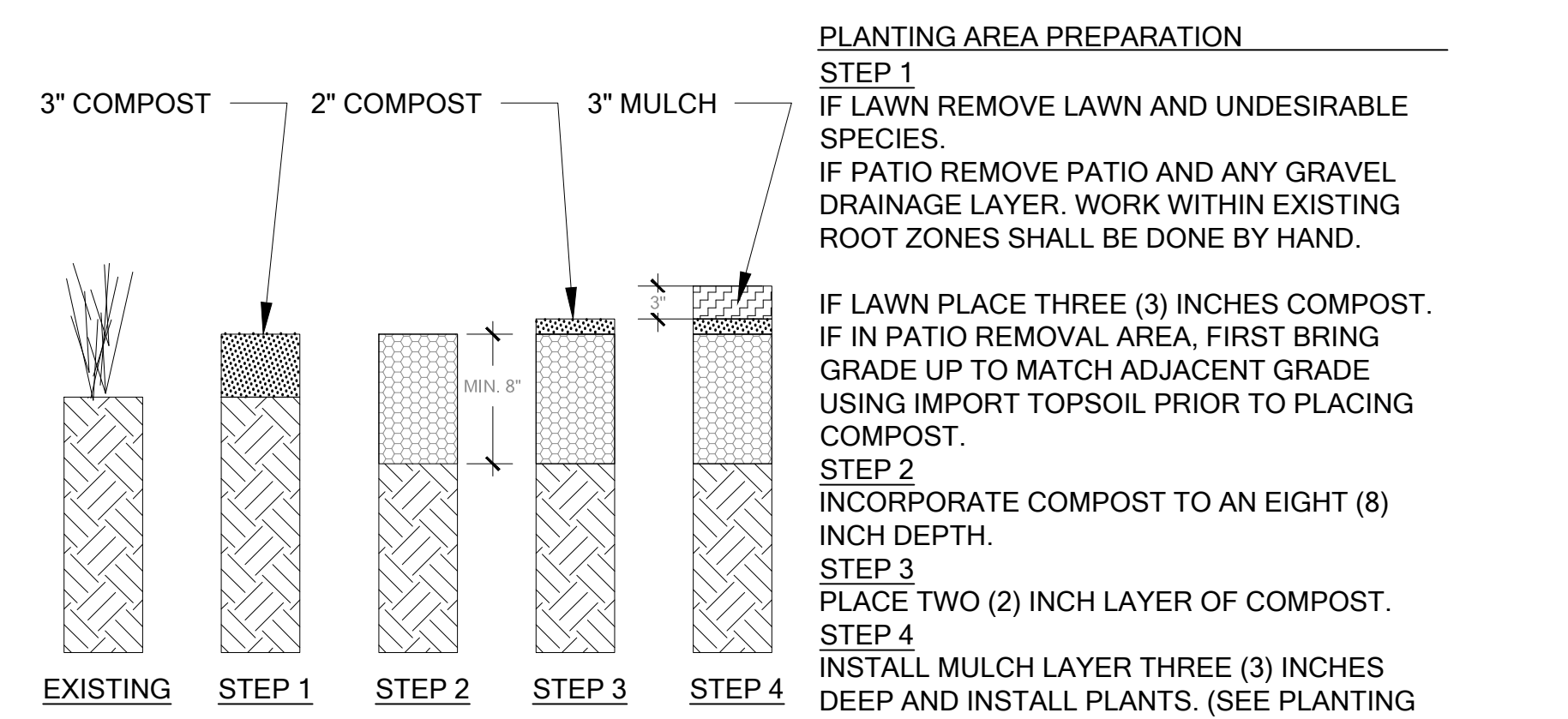
- 1. REPLACE EACH PLANT FOUND DEAD IN THE SUMMER MONITORING VISIT DURING THE UPCOMING FALL DORMANT SEASON (OCTOBER 15TH TO MARCH 1ST).
- 2. INVASIVE SPECIES MAINTENANCE PLAN: HIMALAYAN BLACKBERRY, ENGLISH IVY, ENGLISH LAUREL, AND OTHER INVASIVE WOODY VEGETATION WILL BE GRUBBED OUT BY HAND ON AN ONGOING BASIS, WITH CARE TAKEN TO GRUB OUT ROOTS EXCEPT WHERE SUCH WORK WILL JEOPARDIZE THE ROOTS OF INSTALLED OR VOLUNTEER NATIVE PLANTS. DO NOT USE HERBICIDES IN THE PLANTING AREA.
- 3. AT LEAST TWICE YEARLY, REMOVE BY HAND ALL COMPETING WEEDS AND WEED ROOTS FROM BENEATH EACH INSTALLED PLANT AND ANY DESIRABLE VOLUNTEER VEGETATION TO A DISTANCE OF 12 INCHES FROM THE MAIN PLANT STEM. WEEDING SHOULD OCCUR AS NEEDED DURING THE SPRING AND SUMMER. FREQUENT WEEDING WILL RESULT IN LOWER MORTALITY AND LOWER PLANT REPLACEMENT COSTS.
- 4. DO NOT WEED THE AREA NEAR THE PLANT BASES WITH STRING TRIMMER (WEED WHACKER). NATIVE PLANTS ARE EASILY DAMAGED OR KILLED, AND WEEDS EASILY RECOVER AFTER TRIMMING.
- 5. MULCH THE WEEDED AREAS BENEATH EACH PLANT WITH WOOD CHIP MULCH AS NECESSARY TO MAINTAIN A MINIMUM 4-INCH-THICK, 12-INCH-DIAMETER MULCH RING.
- 6. THE TEMPORARY IRRIGATION SYSTEM WILL BE OPERATED TO ENSURE THAT PLANTS RECEIVE A MINIMUM OF ONE INCH OF WATER PER WEEK FROM JUNE 1ST THROUGH SEPTEMBER 30TH FOR THE FIRST TWO YEARS FOLLOWING INSTALLATION. IRRIGATION BEYOND THE SECOND YEAR MAY BE NEEDED BASED ON SITE PERFORMANCE OR SIGNIFICANT REPLANTING.

CONTINGENCY PLAN

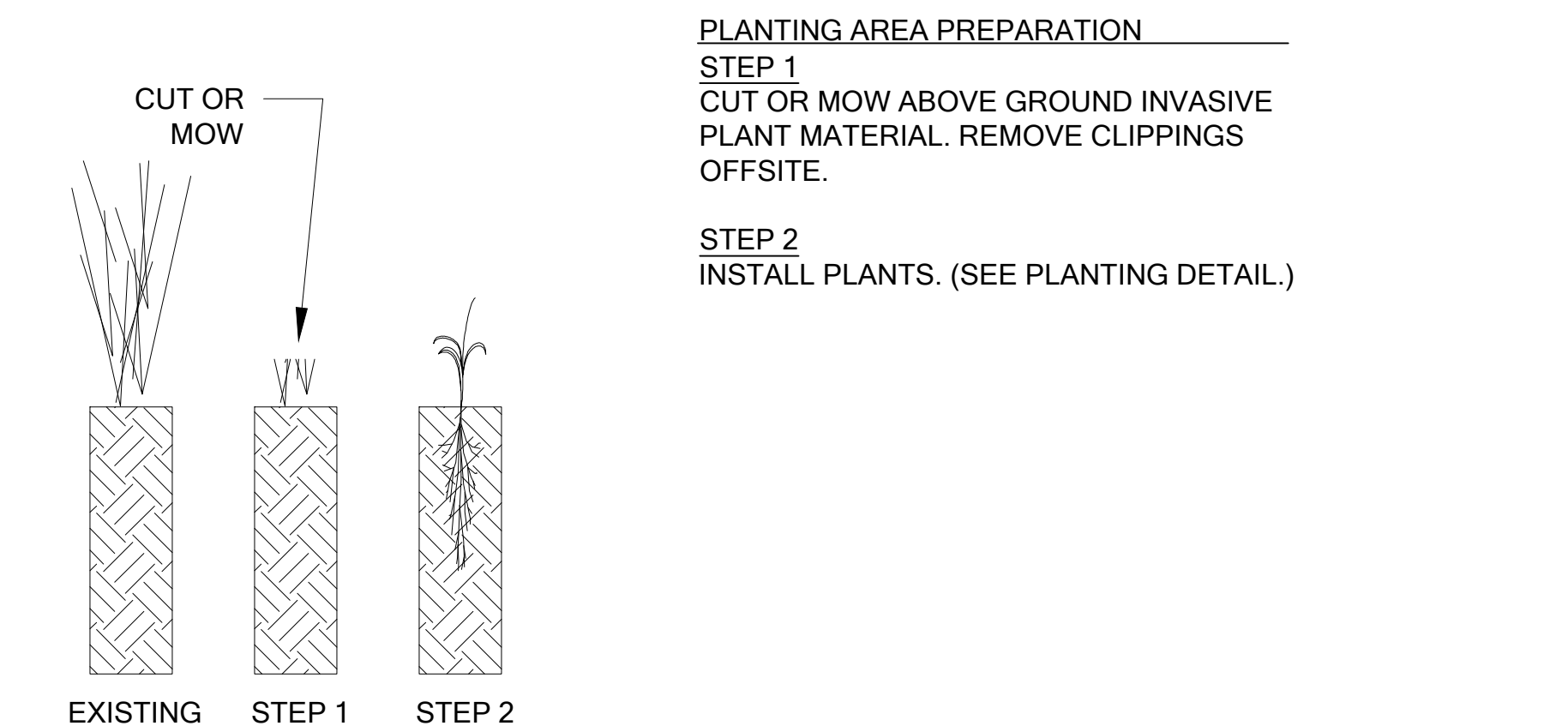
IF ALL OR PART OF THE MITIGATION AREA FAILS TO ESTABLISH ACCORDING TO THE GOALS AND PERFORMANCE STANDARDS, A CONTINGENCY PLAN SHALL BE DEVELOPED. CONTINGENCY MEASURES MAY INCLUDE, BUT ARE NOT LIMITED TO, PLANT SPECIES SUBSTITUTIONS, SOIL AMENDMENTS, HERBIVORE EXCLUSION FENCING, MODIFIED IRRIGATION SCHEDULE, AND ADAPTIVE WEED MANAGEMENT.

MATERIAL SPECIFICATIONS AND DEFINITIONS

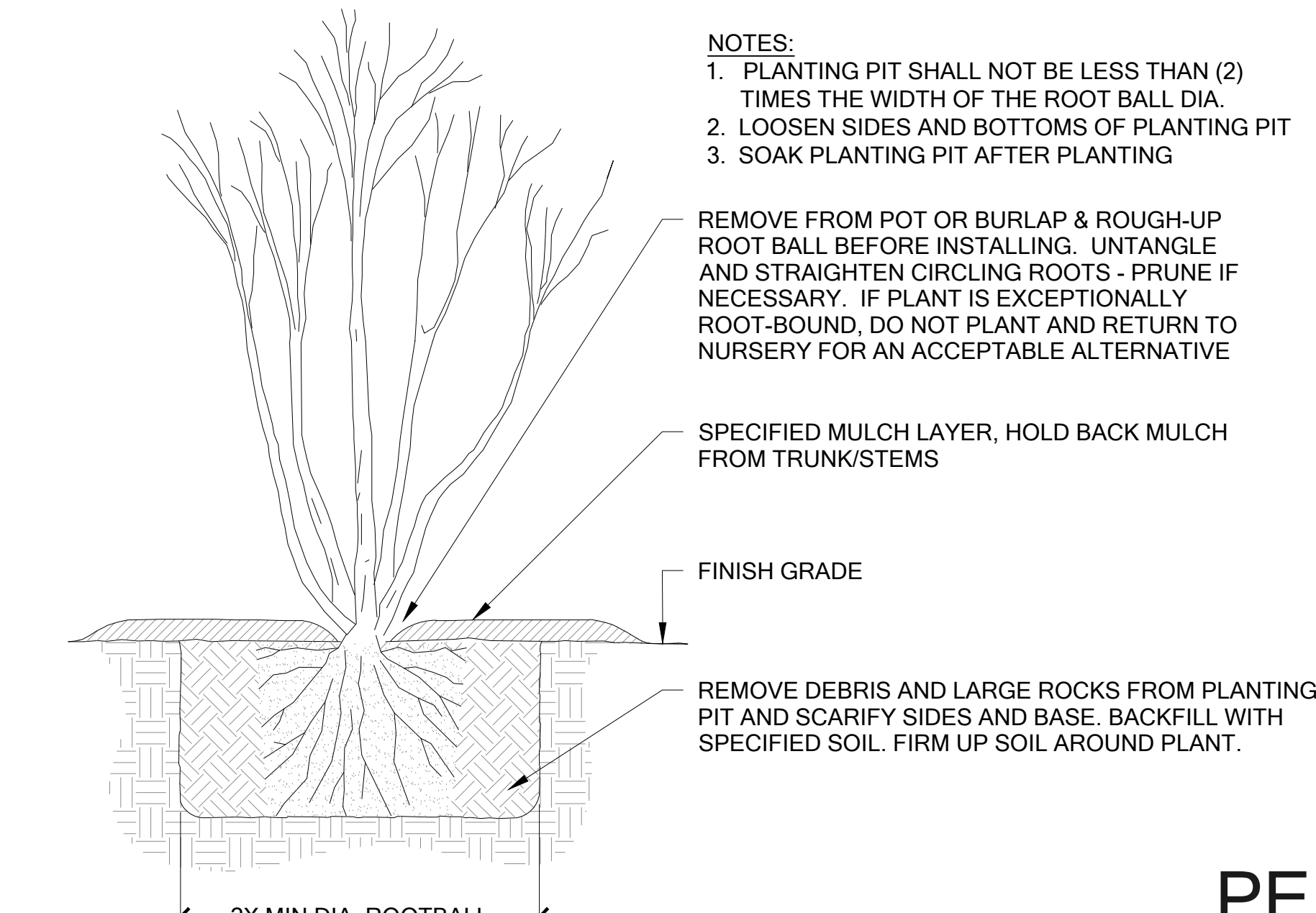
- 1. IRRIGATION SYSTEM: AUTOMATED SYSTEM CAPABLE OF DELIVERING AT LEAST ONE INCH OF WATER PER WEEK FROM JUNE 1 THROUGH SEPTEMBER 30 FOR THE FIRST TWO YEARS FOLLOWING INSTALLATION.
- 2. RESTORATION PROFESSIONAL: WATERSHED COMPANY [(425) 822-5242] PERSONNEL, OR OTHER PERSONS QUALIFIED TO EVALUATE ENVIRONMENTAL RESTORATION PROJECTS.
- 3. WOOD CHIP MULCH: ARBORIST CHIPS (CHIPPED WOODY MATERIAL) APPROXIMATELY 1 TO 3 INCHES IN MAXIMUM DIMENSION (NOT SAWDUST OR COARSE HOG FUEL). THIS MATERIAL IS COMMONLY AVAILABLE IN LARGE QUANTITIES FROM ARBORISTS OR TREE-PRUNING COMPANIES. THIS MATERIAL IS SOLD AS "ANIMAL FRIENDLY HOG FUEL" AT PACIFIC TOPSOILS [(800) 884-7645]. MULCH MUST NOT CONTAIN APPRECIABLE QUANTITIES OF GARBAGE, PLASTIC, METAL, SOIL, AND DIMENSIONAL LUMBER OR CONSTRUCTION/DEMOLITION DEBRIS. QUANTITY REQUIRED: 17 CUBIC YARDS.
- 4. COMPOST: CEDAR GROVE COMPOST OR EQUIVALENT "COMPOSTED MATERIAL" PER WASHINGTON ADMIN. CODE 173-350-220.



A BUFFER MITIGATION AREA SITE PREPARATION SEE SHEET W1 Scale: NTS



B WETLAND MITIGATION AREA SITE PREPARATION SEE SHEET W1 Scale: NTS



C CONTAINER PLANTING DETAIL Scale: NTS

MITIGATION DETAILS AND NOTES

PERMIT SET
 NOT FOR CONSTRUCTION

SUBMITTALS & REVISIONS		BY	DATE	DESCRIPTION
1	08-20-2020	AS/MF	MITIGATION PLANTING PLAN	
2	06-07-2021	AF	MITIGATION PLANTING PLAN REVISED	

SHEET SIZE:
 ORIGINAL PLAN IS 22" x 34".
 SCALE ACCORDINGLY.

PROJECT MANAGER: RK
 DESIGNED: RK/MF
 DRAFTED: AS/MF/AF
 CHECKED: RK

JOB NUMBER: 200509
 SHEET NUMBER: W3 OF 3